

Information Technology, Arizona State University
Configuring Mac OS X for PPP dial-in at ASU

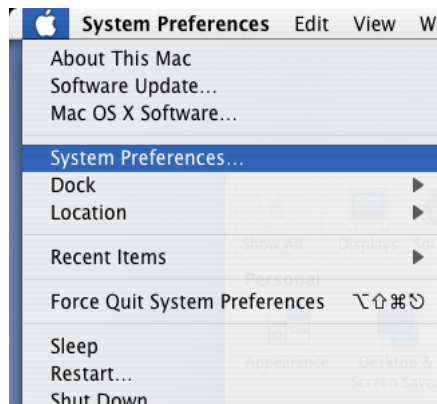
COMMUNICATIONS

12/2004

Introductions

Apple Macintosh OS X PPP is easy and straight forward. Follow the following instructions to set up your Mac to connect to ASU.

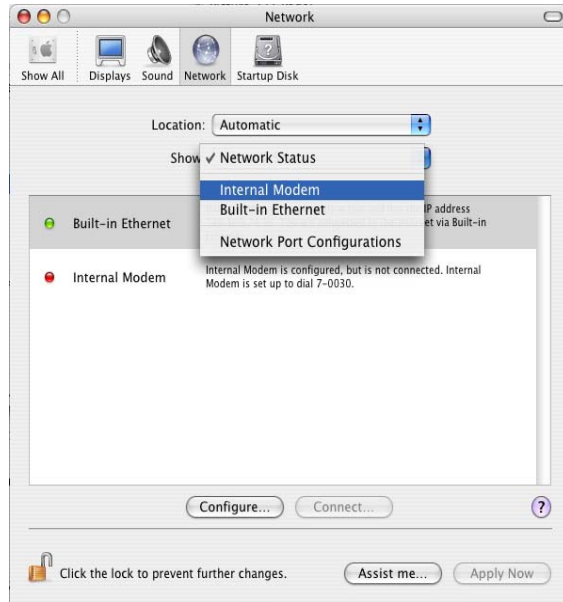
1. Click on the Apple Menu and select System preferences.



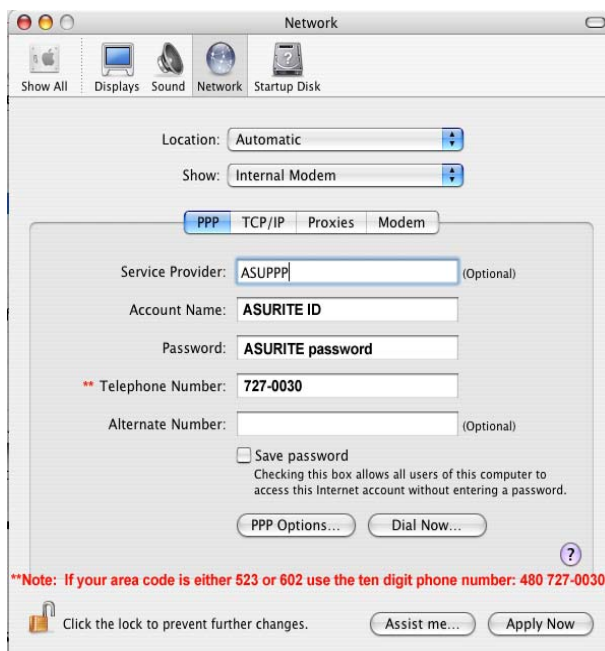
2. From the System Preferences menu select **Network** under **Internet and Network** section.



3. From the Network window click on Network status and select Internal Modem from the drop-down menu.



4. Enter the following info.



5. Click Apply Now.