

School of
Human Evolution & Social Change



Dengue Fever Alert
警惕骨痛热
YOU CAN DO YOUR PART. GET RID OF
您也能尽一份力. 消除工

Ph.D. in
Social Science
and Health

PREPARE TO MAKE A DIFFERENCE

Ph.D. in Social Science and Health

Globalization, rapid urbanization and environmental change carry with it new threats to human health that medical science alone cannot solve.

Effective health care policy and delivery has at its core a sophisticated understanding of the social, cultural, economic and behavioral factors associated with diseases and their transmission.

The new interdisciplinary *Ph.D. in Social Science and Health* explores the complex— and often contradictory— cultural and social bases of health with the goal of discovering sustainable solutions to society's greatest health challenges.

Is it for me?

Graduates are trained to be ready for teaching and research positions, or leadership roles in non-governmental organizations (NGOs), government, or industry. Coursework for the degree is focused on developing real-world skills and a solid grasp of complex concepts. Students work closely with their committee to develop a curriculum appropriate to their chosen interests and career goals. The degree is designed to be completed in no more than five years post-bachelor's degree.

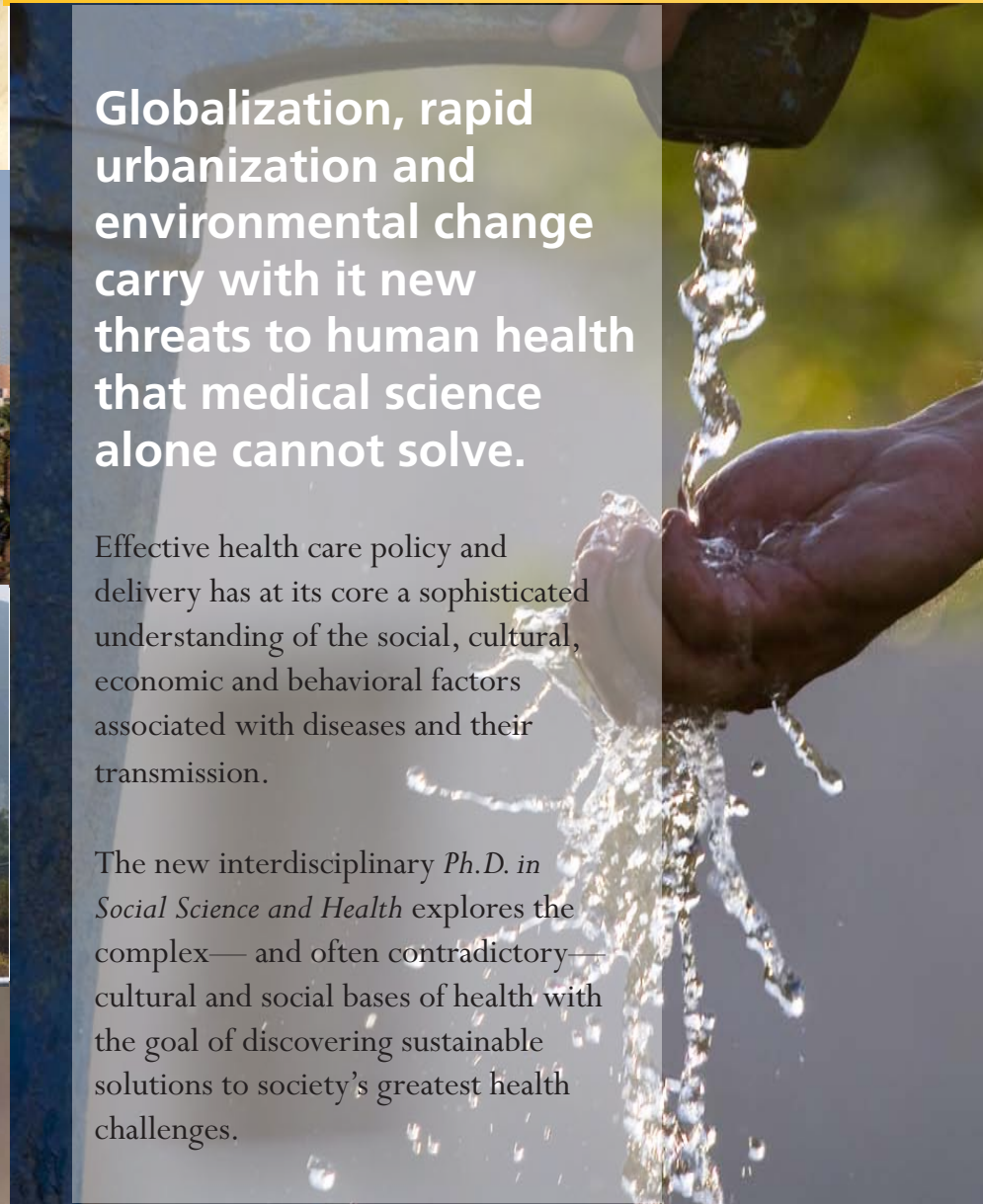
Is there funding?

Competitive funding is available, including attractive multiple-year packages for the top applicants. Most other students are supported through teaching and research assistantships. The School of Human Evolution and Social Change is engaged in numerous large-scale research initiatives that provide significant training and support for students.

How do I apply?

Applications are due before January 1 for first consideration for fall admission (there are no spring admissions). Applicants are required to have a bachelor's degree from a regionally accredited institution with a grade point average of 3.2 (4.0 scale) or better in the last two years of coursework. A master's degree in any relevant field is advantageous, or students can earn a master's-in-passing as part of the Social Science and Health graduate program. Information on the program can be found at www.asu.edu/shesc (see "graduate studies") or apply online at <http://graduate.asu.edu/>.

Learn more about the program at
www.asu.edu/shesc



About the Faculty

While the Ph.D. in Social Science and Health is housed in the School of Human Evolution and Social Change, it involves more than 70 faculty from diverse disciplines across ASU. Students approach real-world problems from a broad and innovative perspective drawn from the following colleges, schools and departments:

Colleges, Schools and Departments:

African and African American Studies
American Indian Studies
Biodesign Institute
Business, W.P. Carey School of
Computing and Informatics
Exercise and Wellness
Geographical Sciences
Global Studies
History
Human Communication, Hugh Downs
School of

Human Evolution and Social Change
Journalism and Mass Communication,
Walter Cronkite School of
Law, Sandra Day O'Connor College of
Life Sciences
Nursing & Health Care Innovation
Nutrition
Religious Studies
Social and Family Dynamics
Sustainability
Transborder Chicana/o and Latina/o Studies
Women and Gender Studies

Program Director:

Prof. Alexandra Brewis
School of Human Evolution and Social Change

About the School of Human Evolution and Social Change

Known for its leadership in innovative education and research, the school integrates tools and knowledge from across the sciences and social sciences to discover not only who we were but where we are going and how we may alter our destiny.

From anthropologists, mathematicians and geographers, to sociologists, economists and natural scientists, our diverse faculty are defining revolutionary approaches to long-standing questions and contemporary issues challenging humankind. Whether your interests lean toward classic four-field anthropology or cutting-edge transdisciplinary research, the School of Human Evolution and Social Change is the place to prepare to make a difference.

Contact:

Graduate Coordinator
School of Human Evolution and Social Change
Arizona State University
PO Box 872402
Tempe, AZ 85287-2402
(480) 965-6215

www.asu.edu/shesc